

**THE LEADING MANUFACTURER
OF EXCAVATOR ATTACHMENTS**
高端智能装备制造商

QBTS
京皓科技



广东省京皓科技有限公司

GUANGDONG KINGHO TECHNOLOGY CO., LTD

地址：深圳市宝安区福永立新南路 201 号锦城商务大厦 8028

Add.: 8028, No. 201, South Lixin Rd, Fuyong, Baoan, Shenzhen, PRC.

Whatsapp/Wechat: +86 130-7695-6018;

+86 177-4866-2666; +86 186-8157-6656;

Email: KinghoParts@126.com

Web.: kingho.en.alibaba.com

广东省京皓科技有限公司

GUANGDONG KINGHO TECHNOLOGY CO.,LTD

地址：深圳市宝安区福永立新南路 201 号锦城商务大厦 8028

Add.: 8028, No. 201, South Lixin Rd, Fuyong, Baoan, Shenzhen, PRC.

Whatsapp/Wechat: +86 130-7695-6018;

+86 177-4866-2666; +86 186-8157-6656;

Email: KinghoParts@126.com

Web.: kingho.en.alibaba.com



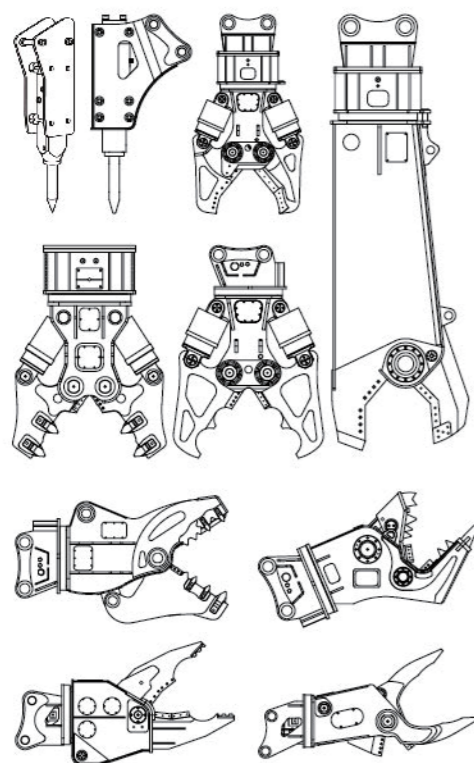
GUIDE FUCTION

导读

QBTS

破碎 / 拆除工程装备

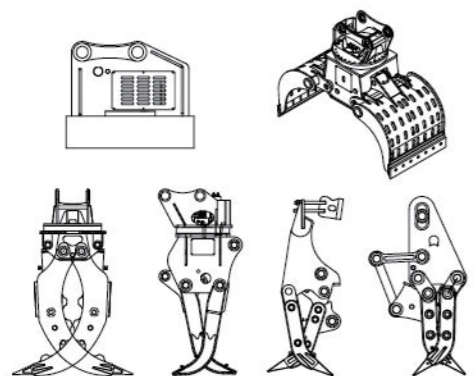
SHATTERED/REMOVED ENGINEERING EQUIPMENT



- 5** 破碎锤 Hydraulic Breaker
用于冶金、矿山、铁路、公路、建筑等领域进行开采、破碎、拆除作业。
- 6** 岩石斗 Excavator Bucket
高强度钢板耐磨可靠，可以定制。
- 6** 栅格斗 skeleton Bucket
高强度钢板耐磨可靠，可以定制。
- 6** 宽窄清淤斗 Excavator Bucket
高强度钢板耐磨可靠，可以定制。
- 7** 双缸大力剪 Powerful shear/Crusher
双油缸和同步机构设计，钢结构、废旧金属品的剪切及钢筋混凝土破碎等
- 8** 鹰嘴剪 Eagle shear
进口刀片，坚固耐用，适用于 HVI 钢、大梁、支重梁、抓船等拆除作业。
- 9** 粉碎钳 Hydraulic Pulverizer
拆迁行业及工业废料等场合。在安全、环保、节约成本等方面作业显著。
- 10** 拆除剪 Concrete Crusher
化工厂、炼钢厂及钢结构厂房的拆除，也能进行混凝土物质的回收。
- 11** 拆车钳 Hydraulic shear(car Dismantling)
各类报废车辆进行剪切拆除，尤其 H 梁、梁构造的钢结构一次性剪切拆除
- 11** 前压架 Excavator Clamp Arm
前压架与拆车钳配套，辅助拆车剪拆车动作，进行精巧的飞速拆车工作。

智能装卸装备

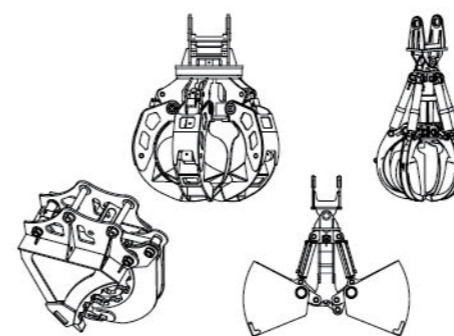
INTELLIGENT LOADING AND UNLOADING EQUIPMENT



- 12** 拆除分拣斗 Sorting Grab
钢铁厂、回收站、港口、货场等场所货物或物料的装卸。
- 12** 吸盘 Excavator Magnet Lift
采用液压发电机驱动发电，用于铁制品废钢分类及装卸、搬运整理整顿。
- 13** 抓钢 / 石 / 木器 Hydraulic steel/Rock/Log Grab
钢铁厂、冶炼厂、港口、码头、林业、贮木场等行业装卸作业。
- 13** 机械抓钢器 Mechanical Grapple
利用挖掘机自身液压系统，免除管路安装，经济高性价比。
- 14** 抓钢 / 石器 B 款 Hydraulic steel/Rock Grab B
单油缸设计，抓取更便捷。

智能装卸装备

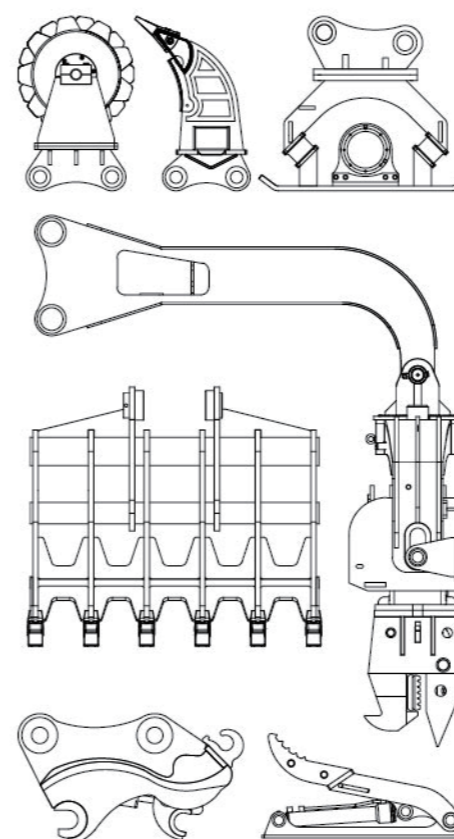
INTELLIGENT LOADING AND UNLOADING EQUIPMENT



- 15** 莲花抓 Orange Peel Grapple
可以装卸大量的散装物料，铁路、港口、木材生产、工程建设等装卸作业。
- 15** 铲斗夹 Clamp Bucket
场地整理、地面清理、碎石场地挖掘和清除、林业及居民拆除等场合作业。
- 16** 倾斜斗 Tilt Bucket
斜坡和平面的修整及河道、水沟的大容量清淤、清洁作业。
- 17** 贝壳斗 Clamshell Bucket
沟或受限制的空间的一侧进行等沙状物料的挖掘和装载。

夯桩及辅助装备

COMPACTION PILING AND AUXILIARY EQUIPMENT



- 17** 拇指夹 Hydraulic Power Thumb
挖掘装载时物料容易翻落的地方，特别是用于装载举升较高的地方。
- 18** 耙子 Excavator Rake
灌木、原木、石材、废弃物等多种工程装卸和作业。
- 18** 松土器 Ripper
开挖裂纹的岩石、破碎冻土、沥青路面、硬土、次坚石、风化石的粉碎、分裂。
- 19** 快速连接器 Hydraulic Quick Hitch
挖掘机上迅速安装、切换各种配置件，节省时间，提高工效。
- 19** 双保险快速连接器 Hydraulic Quick Hitch (Double Lock Type)
进一步提升安全保障。
- 20** 压实轮 Compacting Wheel
结构简单，免维护，使用方便，故障低。
- 20** 枕木机 sleeper Machine
安装简单，降低投资成本。
- 21** 夯实器 Hydraulic Plate Compactor
桥台背、涵侧、路肩、护坡、公路、铁路路基夯实，堤坝及护坡夯实等。
- 22** 打桩机 Pile Hammer
建筑打桩、成孔，高层建筑、立交桥、海港码头、铁路、公路等项目中。

COMPANY PROFILE

公司简介

广东省京皓科技有限公司, 致力于自主研发、生产挖掘机移动智能装备。经过十多年发展, 公司已经拥有一支优秀的技术研发团体和优良的生产工艺流程。

公司主要生产报废汽车拆解机及抓钢器、莲花抓、鹰嘴剪、大力剪、拆车钳、压车架、破碎锤等各种前端智能属具。为市政建设、矿山开采、港口物流、铁路运输、再生资源等行业制造优异的机械设备。

京皓科技先后通过 ISO9001 认证、ISO14001 认证、高新技术企业认证、国家级科技型企业认证、山东省科技型企业认证、BV 认证、SGS 认证、CE 认证、广东省“一企一技术”研发中心认证等。

为满足客户的不同需求, 能对产品整机规格、结构形式、作业范围等进行个性化设计, 并确保产品的耐久性、可靠性, 从根本上树立了质量为本的品质思想和“以客户需求为中心”的经营理念。

京皓科技将充分利用多年来积累的行业丰富经验和企业核心竞争优势, 全力打造多元化移动智能装备制造企业, 向世界流制造企业迈进!



DEVELOPMENT PROCESS

发展历程

2009

2009年2月广东京皓科技有限公司成立。
In February 2009, Guangdong Kingho Technology Co., Ltd. was formally established.

2010-2012

2010年12月公司破碎锤销量突破600台, 实现当年销售额3500万
2011年3月京皓科技DLK品牌第一台快速连接器下线, 标志着京皓科技多元化发展路线正式拉开帷幕。2011年4月京皓科技振动夯、抓木器等其他属具陆续下线。2012年11月京皓科技正式定位专业的挖掘机属具制造商, 当年已经拥有10个以上类别, 50多个型号的产品生产能力, 为挖掘机属具行业不断研发制造新产品。
In December 2010, the company's sales of hydraulic breakers exceeded 600 units, achieving sales of 35 million in that year.
In March 2011, the first hydraulic quick hitch of Guangdong Kingho Technology DLK brand went offline, marking the official opening of the diversified development route of Guangdong Kingho Technology.
In April 2011, other accessories such as the hydraulic plate compactor and hydraulic grapple of Guangdong Kingho Technology were rolled off the production line.
In November 2012, Guangdong Kingho Technology was officially positioned as a professional excavator attachment manufacturer, In that year, it already had more than 10 categories and more than 50 models of production capacity. It continuously developed new products for the excavator attachment industry.

2013-2015

2013年5月陆续通过欧盟CE认证、CIMA资格认证、GOST-R认证。
2013年12月单次出口50万美元产品, 得到国际客户好评。2014年9月京皓科技正式投资破碎锤生产, 定位生产140级别以上大型破碎锤制造企业。2015年12月京皓科技165F、175F、185F系列加重型产品陆续投放市场。
In May 2013, it successively passed EU CE certification, CIMA qualification certification, and GOST-R certification. In December 2013, a single export of 500,000 US dollars of products was well received by international customers.
In September 2014, Guangdong Kingho Technology formally invested in the production of hydraulic breakers, positioning itself to produce large-scale breaker manufacturers above 140.
In December 2015, Guangdong Kingho Technology 165F, 175F, and 185F series heavy-duty products were successively put on the market.

2016

2016年京皓科技六款系列液压剪相继下线, 走出国门。京皓科技占地86亩地的新工厂正式开始启动。
In 2016, Guangdong Kingho Technology's six series of hydraulic shears were rolled off the production line and went abroad. Guangdong Kingho Technology officially opened a new factory covering an area of 57330 square meters.

2017-2019

2017年京皓科技不断更新产品性能, 推出重型液压剪、鳄鱼式粉碎钳、新型抓钢器等产品。购置多台数控机床, 扩大生产能力。
2018年上海国际工程机械宝马展览会(BAUMA CHINA)订单销量翻一倍。成功研发报废汽车拆解机等大型机械设备。2019年相继参加国内外的中国(北京)国际工程机械展览与技术交流会等各大展会, 扩大世界影响力。
In 2017, Guangdong Kingho Technology continuously updated its product performance and introduced products such as hydraulic power shear, hydraulic pulverizer, and new steel grabbers. Guangdong Kingho Technology purchased multiple CNC machine tools to expand production capacity.
In November 2018, the sales volume of BAUMA CHINA at Shanghai International Construction Machinery doubled. Successfully developed large machinery and equipment such as scrap car disassemblers.
In 2019, we have participated in China (Beijing) International Construction Machinery Exhibition and Technology Exchange Conference (BICES) and other major exhibitions to expand the influence of the world.

2020-2022

2020年扩大生产能力, 增加各类大型生产设备, 提高拆车机、打桩机、重型液压剪等产品效能。2021年陆续通过通过ISO9001认证、ISO14001认证、高新技术企业认证。2022年通过液压剪、粉碎钳等新产品CE认证。
In 2020, we will expand production capacity, increase various types of large-scale production equipment, and improve the efficiency of car scrapers, pile drivers, and hydraulic power shears.
In 2021, it will successively pass ISO9001 certification, ISO14001 certification, and high-tech enterprise certification.
In 2022, it will pass CE certification for new products such as hydraulic shears and crushing pliers.

2023

2023年扩建厂房投入使用, 安装多台数控机床扩大产能。
In 2023, the expanded workshop will be put into use, and multiple CNC machine tools will be installed to expand production capacity.

破碎 / 拆除工程装备

液压破碎锤

Hydraulic Breaker



三角型
Side Type

直角型
Top Type

静音型
Box Type

项目 / 型号 Item/Model	单位 Unit	JSB100	JSB200	JSB300	J5B400	JSB600	JSB800	JSB900	JSB1600	JSB1900	JSB3500	JSB4500	JSB5000	JSB6000	JSB6500
三角型重量 SideTypeWeight	kg	105	135	150	300	410	450	800	1600	1840	2800	3200	4000	5700	6200
直角型重量 TopTypeWeight	kg	85	140	160	355	440	640	900	1800	1970	2850	3160	4120	5300	7200
静音型重量 BoxTypeWeight	kg	100	167	194	363	450	730	970	1950	2050	3000	3300	4250	5400	7400
三角型长 SideTypeLength	mm	900	1100	1200	1347	1528	1920	2260	2695	2810	3152	3810	3400	3420	3700
直角 / 静音型长 TAatgle	mm	1000	1300	1400	1700	1750	2100	2400	2700	2860	3100	3286	3800	4200	4300
压力 Pressure	bar	100-150	100-150	100-150	160-180	160-180	160-180	160-180	200-240	200-240	240-260	240-260	260-280	300-320	300-320
流量 Flow	lpm	15-25	20-40	25-50	40-70	50-90	60-100	80-120	160-200	160-200	160-200	180-240	210-290	230-320	360-450
频率 Rate	bmp	900-1400	700-1200	600-1200	500-800	400-800	400-700	400-700	400-700	400-600	250-400	250-350	200-350	150-200	150-200
软管直径 Hose	inch	1/2	1/2	1/2	1/2	1/2	3/4	3/4	1	1	1%	1%	1%	1%	1%
钎杆直径 Chisel	mm	40	45	53	68/70	75	85	100	135	140	155	165	175	195	205
适配 Suit	ton	0.8-2.0	1.2-3.0	2.5-4.5	4-7	6-9	7-14	11-16	19-26	19-26	19-26	36-45	40-55	55-65	65-100

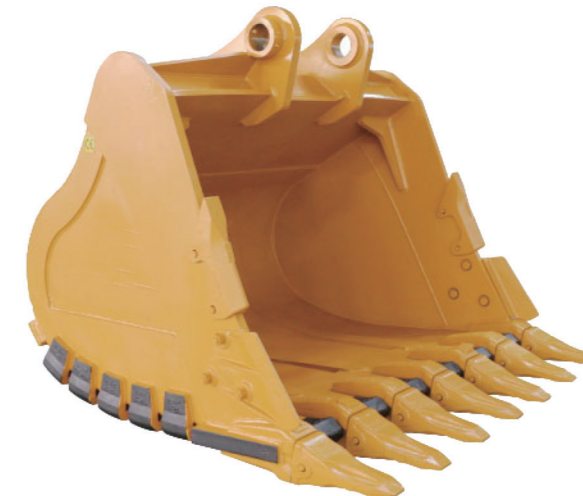
破碎 / 拆除工程装备

岩石斗

Rock Bucket

适用对象：挖掘硬土、土中混有较软的碎石、砾石的装载等重载作业；宽大的斗口，方便装载大块岩石或碎石；特别设计的齿板，能够轻松装载大块岩石，加速装载过程。
 主要特点：在土方斗的基础上对高应力和易磨损部位，采用高强度钢板进行制造，并采用铸造护板、护块及特殊的工艺加工，提高了岩石斗的耐用性、工作效率。质量可靠，使用寿命长。

Applicable objects: Heavy duty operations such as excavation of hard soil, loading of soft gravel and gravel mixed with soil; Wide mouth, easy to load large rocks or gravel; The specially designed tooth plate can easily load large rocks and speed up the loading process.
 Main features: On the basis of earthmoving bucket, high stress and easy to wear parts are manufactured with high strength steel plate, and casting guard plate, guard block and special technology processing, which improves the durability and working efficiency of rock bucket. Reliable quality, long service life.



破碎 / 拆除工程装备

栅格斗

Skeleton Bucket

适用对象：分离较松散物料的挖掘，挖掘与分离一次完成，广泛用于市政、农业、林业、水利、土石方工程。其采用了高强度钢板及铸造护板、护块，在硬土、土中混有较软的碎石、砾石的工作作业下能够提高工作效率。
 主要特点：高强度钢板进行制造，并采用铸造护板、护块及特殊的工艺加工，提高了栅格斗的耐用性、工作效率。质量可靠，使用寿命长。

Applicable objects: It is widely used in municipal, agricultural, forestry, water conservancy and earthwork engineering. It adopts high-strength steel plate and cast guard plate and guard block, which can improve working efficiency in hard soil and soil mixed with soft gravel and gravel.
 Main features: The high strength steel plate is manufactured, and the casting guard plate, guard block and special process are used to improve the durability and work efficiency of the grille bucket. Reliable quality, long service life.



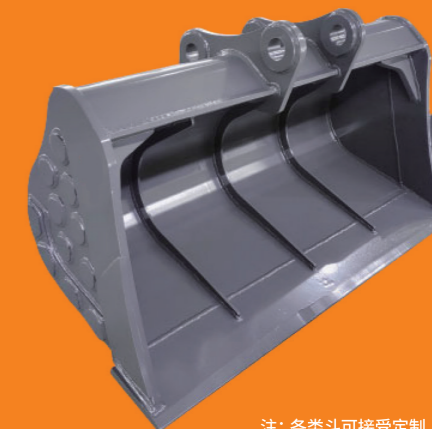
破碎 / 拆除工程装备

宽窄清淤斗

Excavator Bucket

适用对象：斜坡等平面的修整及河道、水沟的大容量清淤、清洁工作，其中倾斜斗能通过油缸来改变清淤斗的倾斜角度，大大提高工作效率。
 主要特点：高强度钢板进行制造，提高了清淤斗的耐用性、工作效率。质量可靠，使用寿命长。

Applicable objects: Slope and other plane dressing and river, ditch of large capacity silt, cleaning work, in which the tilt bucket can change the tilt Angle of the cleaning bucket through the oil cylinder, greatly improve work efficiency.
 Main features: The high strength steel plate is manufactured to improve the durability and work efficiency of the cleaning bucket. Reliable quality, long service life.



注：各类斗可接受定制

破碎 / 拆除工程装备

双缸大力剪 Powerful Shear/Crusher

适用对象：钢结构和汽车大梁的切割及破碎，废旧汽车、废旧金属制品的拆解工作。
 主要特点：采用双油缸和同步机构，强大剪切力与轻量化的组合；
 旋转马达采用瑞士进口马达，全角度旋转；
 油缸采用珩磨管，进口 NOK 油封，工作周期短、寿命长；
 刀块采用耐磨合金钢，抗高温、耐变形。

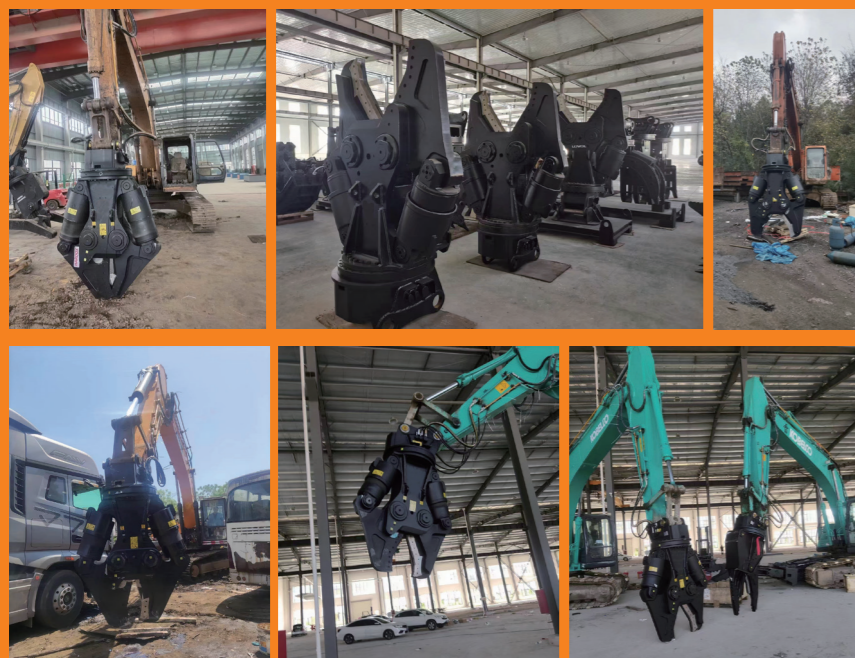
Applicable objects: cutting and crushing of steel frame structures and automobile beams, dismantling of scrap automobiles and scrap metal products.
 Main features: Double oil cylinders and synchronization mechanism are adopted, combining strong shearing force and light weight;
 The rotating motor adopts the Swiss imported motor, which rotates in full angle;
 The oil cylinder adopts honing tube and imported NOK oil seal, short working cycle and long life;
 The knife block is made of wear-resistant alloy steel, which is resistant to high temperature and deformation.



剪切型
Powerful Shear



破碎型
Powerful Crusher

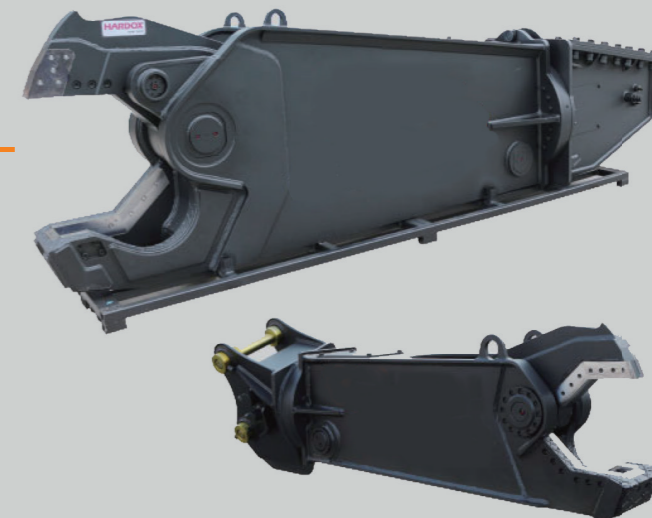


破碎 / 拆除工程装备

鹰嘴剪 Eagle Shear

适用对象：大型钢材拆解作业。
 主要特点：采用瑞典 Hardox Hituf 钢材，韧性好、耐磨；
 销轴采用 42CrMo 合金钢，强度高、韧性好
 采用瑞士进口旋转马达，扭矩大、转速快；
 大油缸采用珩磨管，进口 NOK 油封，工作周期短，寿命长；
 刀块采用耐磨合金钢，抗高温、耐变形。

Applicable object: disassembly of large steel.
 Main features: Made of Swedish Hardox Hituf steel, good toughness and wear resistance;
 The pin is made of 42CrMo alloy steel with high strength and toughness;
 Rotary motor imported from Switzerland, high torque and fast speed;
 Big oil cylinder adopts honing tube, imported NOK oil seal, short working cycle and long life;
 The knife block is made of wear-resistant alloy steel, which is resistant to high temperature and deformation.



项目 / 型号 Item/Model	单位 Unit	破碎型										射切型				
		JSDH40	JSDH40M	JSDH80	JSDH80M	JSDH180	JSDH180M	JSDH290	JSDH290M	JSDH380	JSDH380M	JSDF40M	JSDF80	JSDF180	JSDF290	JSDF390
适用挖掘机 Suitable Excavator	ton	3-5	3-5	69	6-9	12-18	12-18	20-30	20-30	30-40	30-40	3-5	6-9	12-18	20-30	a23+/b24+
重量 Weight	kg	280	280	TBD	T30	1370	1370	2320	2720	2780	2780	360	750	1600	2800	a:4400/b:4800
驱动压力 Driving Pressure	bar	200	200	240	240	300	300	320	320	320	320	200	250	300	320	320
驱动流量 Driving Flow	L/min	60	60	150	250	250	280	280	350	350	350	60	150	250	280	350
开口 Opening A	mm	360	360	680	630	800	800	1100	1100	1550	1550	335	435	600	740	800
剪切深度 Cutting Depth B	mm	240	240	420	420	510	510	780	780	980	980	280	330	460	550	650
长度 Overall Length C	mm	970	970	1720	1720	2070	2070	2340	2340	2185	2785	1160	1420	1900	2207	a:2700/b:3636
刀片长度 Blade Length D1/D2(D)	mm	120	120	120	160	160	160	200	200	240	240	180+130	210+155	300+210	350+260	350+360
剪切力 1 Shearing Force1	ton	40	40	60	60	112	112	173	173	211	211	37	62	108	156	250
剪切力 2 Shearing Force2	ton	-	-	-	-	-	-	-	-	-	-	24	43	75	100	150
粉碎力 Crushing Force	ton	24	24	40	40	72	72	116	116	150	150	-	-	-	-	-

注：M-机械回转

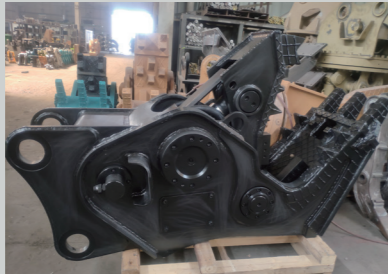
项目 / 型号 Item/Model	单位 Unit	液压型										机械型		
		JS40RT	JS80RT	JS150RT	JS280RT	JS380RT	JS400RT	JS450RT	JS500RT	JS80RT	JS150RT	JS280RT	JS380RT	
小臂安装 Arm Installation	ton	3-5	6-9	12-18	20-28	30-38	36-45	40-50	46-60	60-80	12-18	20-28	30-38	
大臂安装 Boom Installation	kg	-	-	-	-	30-38	26-45	30-50	36-60	50-80	-	-	-	
工作压力 Working Pressure	bar	200	200	250-300	250-300	300-320	320-350	320-350	320-350	320-350	250-300	250-300	300-320	
工作流量 Working Flow	lpm	80	100	90-110	180-220	200-250	200-250	250-300	250-300	500-600	90-100	180-220	200-250	
重量 Weight	kg	420	580	1350	2150	3800/4200	4500/5100	5600/5900	6500/6800	8500/8800	750	1250	1650	
旋转流量 Rotating Flow	lpm	20	240	30-40	30-40	30-40	30-40	30-40	30-40	50-60	-	-	-	
旋转压力 Rotating Pressure	bar	100	100	90-100	100-115	100-115	100-115	100-115	100-115	140-150	-	-	-	
开口 Opening	mm	200	300	380	485	600	660	700	800	900	380	480	600	
剪口深 Cutting Depth	mm	200	310	400	525	630	680	720	800	850	400	525	630	
全长 Full Length	mm	1450	1790	2100	2700	3450/4600	3770/4930	4550/5250	4600/5300	5200/5900	980	1400	1700	

破碎 / 拆除工程装备

粉碎钳 Hydraulic Pulverizer

适用对象：分离钢筋混凝土等破拆作业。
 主要特点：采用瑞典 Hardox 500 钢材，质量轻、耐磨；
 销轴采用 42CrMo 合金钢，强度高、韧性好；
 旋转式采用瑞士进口旋转马达；
 油缸采用珩磨管，进口 HALLITE 油封，寿命长；
 刀块采用耐磨合金钢，抗高温、耐变形。

Applicable objects: Demolition operations such as separating reinforced concrete.
 Main features: Made of Swedish Hardox 500 steel, lightweight and wear-resistant;
 The pin is made of 42CrMo alloy steel with high strength and toughness;
 Rotary type uses Swiss imported rotary motor;
 Oil cylinder adopts honing tube, imported HALLITE oil seal, long life;
 The knife block is made of wear-resistant alloy steel, which is resistant to high temperature and deformation.



项目 / 型号 Item/Model	位 Unit	吸盘式		旋转式		倒置式				旋转大力式		重型	机械型	
		JSP220M600	JSP230M800	JSP150X	JSP220X	JSP80C	JSP150C	JSP220C	JSP230	JSRP180	JSHP280	JSRP28	JSMP200	SMP30
适用挖掘机 Suitable Excavator	ton	20-24	26-30	12-18	20-30	6-9	12-18	20-24	26-30	12-18	20-30	20-30	20-28	30-38
重量 Weight	kg	1800	2300	1200	1750	480	800	1400	1700	1260	2250	2050	1200	1500
开口 Opening	mm	705	850	570	700	500	606	705	850	600	765	975	400	430
刀片长度 Blade Length	mm	180	230	130	180	130	130	180	230	140	180	200	-	-
长度 Length	mm	2130	2400	2000	2285	1525	1820	2130	2400	2050	2300	2322	1324	1514
宽度 Width	mm	600	800	600	752	450	450	550	610	440	550	590	730	825
粉碎力 Crushing Force	ton	80	100	65	80	40	65	80	100	100	150	150	-	-
驱动压力 Driving Pressure	bar	300	300	280	320	200	250	320	320	250	300	320	-	-
驱动流量 Driving Flow	lpm	200	200	200	200	100	150	200	200	150	200	200	-	-
直径 Outer Diamete	mm	600	800	-	-	-	-	-	-	-	-	-	-	-
旋转马达压力 Rotating Motor Pressure	lpm	-	-	90	120	-	-	-	-	120	120	-	-	-
旋转马达流量 Rotating Motor Flow	mm	-	-	30.50	40-60	-	-	-	-	40-60	40-60	-	-	-

破碎 / 拆除工程装备

拆除剪 Concrete Crusher

适用对象：楼房拆除、钢材剪切等破碎、剪切作业。
 主要特点：采用瑞典 Hardox 500 钢材，质量轻、耐磨；
 销轴采用 42CrMo 合金钢，强度高、韧性好；
 旋转马达采用瑞士进口马达，全角度旋转；
 油缸采用珩磨管，进口 HALLITE 油封，工作周期短、寿命长；
 刀块采用耐磨合金钢，抗高温、耐变形。

Applicable objects: crushing and shearing operations such as building demolition and steel shearing
 Main features: Made of Swedish Hardox 500 steel, lightweight and wear-resistant;
 The pin is made of 42CrMo alloy steel, with built-in oil passage, high strength and good toughness;
 Rotary motor adopts Swiss imported motor, full-angle rotation;
 The oil cylinder adopts honing tube, imported HALLITE oil seal, short working cycle and long life;
 The knife block is made of wear-resistant alloy steel, which is resistant to high temperature and deformation.



拆除剪
Concrete Crusher



小型拆除剪
Mini Crusher

项目 / 型号 Item/Model	单位 Unit	拆除剪								小型拆除剪					
		JSDS80	JSDS30M	JSDS150	JSDS150M	JSD5200	JSDS200M	JSDS300	JSDS300M	JSMS20	JSMS40	JSMS150	JSMS150M	JSMS200	JSMS200M
适用挖掘机 Suitable Excavator	ton	6-9	6-9	12-18	12-18	20-28	20-28	30-38	30-38	15-2.5	3-5	12-18	12-18	20-28	20-28
重量 Weight	kg	360	300	1000	950	1750	1700	2150	2100	135	220	1900	1900	2450	2350
开口 Opening	mm	390	390	570	570	820	820	810	810	290	350	800	800	1000	1000
刀片长度 Blade Length	mm	100	100	150	150	180	180	180	180	100	100	160	160	160	160
高度 Height	mm	1280	1280	1756	1756	1980	1980	2120	2120	1000	1148	2445	2445	2502	2502
宽度 Width	mm	850	850	1146	1146	1400	1400	1500	1500	660	785	1560	1560	1960	1960
粉碎力 Crushing Force	ton	20	20	80	80	100	100	120	120	20	22.5	-	79	132	132
剪切力 Cutting Force	ton	50	50	165	165	210	210	260	260	-	-	-	-	-	-
驱动压力 Driving Pressure	bar	250	250	280	280	300	300	300	300	180	200	320	320	320	320
驱动流量 Driving Flow	lpm	120	120	200	200	200	200	200	200	30	40	240	240	350	350

注：M-机械回转

破碎 / 拆除工程装备

拆车钳 Hydraulic Shear (Car Dismantling)

适用对象：各类报废车、钢材的拆解作业。
 主要特点：采用瑞典 Hardox 500 钢材，质量轻、耐磨；
 销轴采用 42CrMo 合金钢，强度高、韧性好；
 采用瑞士进口旋转马达；
 油缸采用珩磨管，进口 HALLITE 油封，工作周期短，寿命长；
 刀块采用耐磨合金钢，抗高温、耐变形。

Applicable object: dismantling of various scrap cars and steel.
 Main features: Made of Swedish Hardox 500 steel, lightweight and wear-resistant;
 The pin is made of 42CrMo alloy steel with high strength and toughness;
 Rotary motor imported from Switzerland;
 The oil cylinder adopts honing tube, imported HALLITE oil seal, short working cycle and long life;
 The knife block is made of wear-resistant alloy steel, which is resistant to high temperature and deformation.



项目 / 型号 Item/Model	单位 Unit	精细型拆车钳		粗放型拆车钳	加强型拆车钳	新型拆车钳	
		JSA150	JSA230	JSC200	JSE260	JSF80	JSF180
适用挖掘机 Suitable Excavator	ton	12-18	20-30	20-30	20-30	6-12	15-24
重量 Weight	kg	900	1600	1600	1600	600	1200
最大张幅 Opening With Jaw	mm	650	850	650	720	680	850
全长 Overall Length	mm	2110	2530	2400	2390	1940	2490
全宽 Overall Width	mm	1115	1430	1175	1050	975	1215
刀片长度 Blade Length	mm	2-1852	2-230*2	520	600	180	220
最大切割力 Maximum Cutting Force	ton	75	120	140	230	54	107
驱动压力 Driving Pressure	bar	220	320	320	320	180	280
驱动油量 Driving Flow	lpm	180	200	200	200	120	180
旋转马达压力 Rotating Motor Pressure	bar	100	100	100	100	100	100
旋转马达流量 Rotating Motor Flow	lpm	20-30	20-30	20-30	20-30	20-30	20-30
旋转马达速度 Rotating Motor Frequency	r/min	10-12	10-12	10-12	10-12	10-12	10-12

破碎 / 拆除工程装备

前压架 Excavator Clamp Arm

适用对象：拆解作业辅助设备。
 主要特点：采用 NM500 钢材，质量轻、耐磨；
 油缸采用珩磨管，进口 HALLITE 油封，工作周期短、寿命长。

Applicable object: dismantling auxiliary equipment.
 Main features: NM500 steel, light weight and wear-resistant;
 The oil cylinder adopts honing tube, imported HALLITE oil seal, short working cycle and long life.



项目 / 型号 Item/Model	单位 Unit	双作用夹臂			单作用夹臂	
		JSCA15D	JSCA20D	JSCA20DL	JSCA15S	JSCA20S
适用挖掘机 Suitable Excavator	ton	9-16	17-25	17-25	9-16	17-25
重量 Weight	kg	2800	3200	3200	2100	2800
最大开口 Maximum Opening	mm	2800	3600	3600	-	-
上下高度 Maximum Height	mm	2200	2600	2600	2000	3000
额定压力 Rated Pressure	bar	250	280	280	280	250
额定流量 Rated Flow	lpm	220	220	220	120	120
张开周期 Opening Cycle	sec	2.1	2.9	2.9	-	-
闭合周期 Closed Cycle	sec	2.3	2.7	2.7	-	-

注：S - 单作用夹臂型；D - 双作用夹臂型；L - 底座加宽型

智能装卸装备

拆除分拣斗 Sorting Grab

适用对象：各种大型、散装物料装卸或搬运作业。
 主要特点：采用 Q345 锰板钢材，强度高、耐腐蚀；
 销轴采用 42CrMo 合金钢，强度高、韧性好；
 采用瑞士进口旋转马达；
 油缸采用珩磨管，进口 HALLITE 油封，工作周期短、寿命长。

Applicable object: all kinds of large-scale, bulk materials loading and unloading or handling operations.
 Main features: using Q345 manganese plate steel, high strength and corrosion resistance;
 The pin is made of 42CrMo alloy steel, with built-in oil passage, high strength and good toughness;
 Rotary motor imported from Switzerland;
 The oil cylinder adopts honing tube, imported HALLITE oil seal, short working cycle and long life.



项目 / 型号 Item/Model	单位 Unit	JSSG1400	JSSG1800	JSSG2200	JSSG2300
适用挖掘机 Suitable Excavator	ton	6-9	9-16	18-26	28-35
重量 Weight	kg	530	1130	1880	2410
高度 Height	mm	1370	1860	2130	2470
宽度 Width	mm	620	850	1100	1380
开口 Opening	mm	1400	1800	2200	2300
驱动压力 Driving Pressure	bar	180	260	320	320
驱动流量 Driving Flow	lpm	100	100	200-250	200-250

智能装卸装备

吸盘 Excavator Magnet Lift

适用对象：铁制品物料装卸、搬运作业。
 主要特点：采用液压发电机驱动发电，无需额外安装；
 采用 Q345 锰板钢材，强度高、耐腐蚀；
 半永久设计，减少管路维护费用。

Applicable objects: loading, unloading and handling of iron products.
 Main features: hydraulic generators are used to drive power generation without additional installation;
 Using Q345 manganese plate steel, high strength and corrosion resistance;
 Semi-permanent design reduces pipeline maintenance costs.



电磁型 Electromagnetic Type

液压型 Hydraulic Type

项目 / 型号 Item/Model	单位 Unit	电磁型					液压型							
		JSEL1000	JSEL1200	JSEL1300	JSEL1500	JSEL1650	JSMLB00	JSML800T	JSML1000	JSML1000T	JSML1200	JSML1200T	JSML1300	JSML1300T
适用挖掘机 Suitable Excavator	ton	12-16	18-22	23-26	28-32	32-40	12-16	12-16	18-24	18-24	26-30	26-30	30-40	30-40
重量 Weight	kg	1000	1400	1550	2300	2600	820	920	1200	1350	1650	2000	2000	2400
功率 Power	kW	7	10	11.9	15.6	16.5	3.9	3.9	7	7	10	10	11.9	11.9
直径 Outer Diamete	mm	1000	1200	1300	1500	1650	800	800	1000	1000	1200	1200	1300	1300
工作流量 Working Flow	lpm	-	-	-	-	-	90-110	90-110	100-140	100-140	130-170	130-170	160-200	160-200
工作压力 Working Pressure	bar	-	-	-	-	-	190	190	200	200	210	210	250	250

注：T - 增加斗齿型

智能装卸装备

抓钢/石/木器 Hydraulic Steel/Rock/Log Grab

适用对象: 简易松土、清理杂物、装卸等作业。
 主要特点: 采用 NM400 钢材, 质量轻、耐磨;
 销轴采用 42CrMo 合金钢, 内置油道, 强度高、韧性好;
 采用瑞士进口旋转马达;
 使用立式铄车马达旋转系统, 360° 旋转, 具有铄车制动功能;
 油缸采用珩磨管, 进口 HALLITE 油封, 工作周期短、寿命长;
 抓齿采用锰钼合金材料, 经久耐用。

Applicable objects: simple soil loosening, cleaning debris, loading and unloading.
 Main features: NM400 steel, light weight and wear-resistant;
 The pin is made of 42CrMo alloy steel, with built-in oil passage, high strength and good toughness;
 Rotary motor imported from Switzerland;
 Use vertical car motor rotation system, 360° rotation, with car brake function;
 The oil cylinder adopts honing tube, imported HALLITE oil seal, short working cycle and long life;
 The teeth are made of manganese molybdenum alloy material, which is durable.



项目 / 型号 Item/Model	单位 Unit	JS40A	JS60A	JS60AP	JS150A	JS150AP	JS220A	JS220AP	JS300A
适用挖掘机 Suitable Excavator	ton	4-5	6-9	6-9	9-16	12-18	18-26	20-28	28-35
重量 Weight	kg	320	410	410	900	900	1550	1850	2130
开口 Opening	mm	1060	1400	1400	1600	1600	2000	2000	2500
工作压力 Working Pressure	bar	110-140	120-160	120-160	150-170	150-170	160-180	160-180	160-180
设定压力 Set Up Pressure	bar	170	180	180	190	190	200	200	210
工作流量 Working Flow	lpm	30-55	50-100	50-100	90-110	90-110	100-140	100-140	130-170

注: P-卡爪为 3+4 抓

智能装卸装备

机械抓钢器 Mechanical Grapple

适用对象: 配合各种型号挖机辅助快速作业。
 主要特点: 采用 NM400 钢材, 质量轻、耐磨;
 销轴采用 42CrMo 合金钢, 内置油道, 强度高、韧性好。

Applicable object: Cooperate with various types of excavators to assist fast operation.
 Main features: NM400 steel, light weight and wear-resistant;
 The pin is made of 42CrMo alloy steel, with built-in oil passage, high strength and good toughness.



项目 / 型号 Item/Model	单位 Unit	JSMG04A	JSMG06A	JSMG08A	JSMG08AP	JSMG10A	JSMG06C	JSMG08C	JSMG08CP	JSMG10C
适用挖掘机 Suitable Excavator	ton	6-9	9-16	18-24	18-26	26-35	9-16	18-24	18-26	26-35
重量 Weight	kg	270	485	1010	1330	1100	690	1300	1500	1450
高度 Height	mm	1247	1530	2150	2150	2160	1500	1992	1992	2066
宽度 Width	mm	544	602	760	1060	880	610	750	1020	840
开口 Opening	mm	1200	1650	2000	2000	2000	1600	2050	2050	2160
二齿宽 Two Tine Width	mm	318	366	460	-	540	400	490	-	580
三齿宽 Three Tine Width	mm	544	602	760	740	880	610	750	750	840
四齿宽 Four Tine Width	mm	-	-	-	1060	-	-	-	1020	-

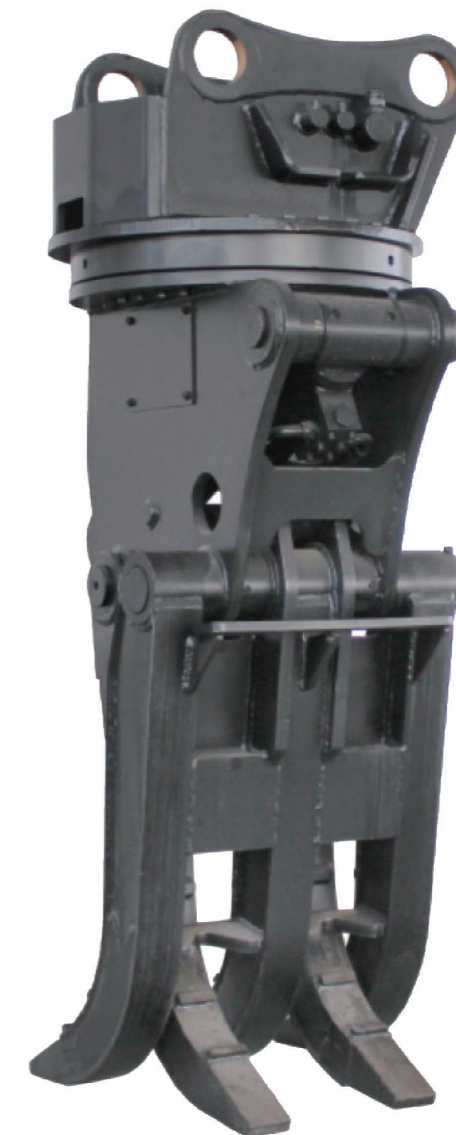
注: P-卡爪为 3+4 抓

智能装卸装备

抓钢/石器 B 款 Hydraulic Steel/Rock Grab, B

适用对象: 简易松土、清理杂物、装卸等作业。
 主要特点: 采用 NM400 钢材, 质量轻、耐磨;
 销轴采用 42CrMo 合金钢, 内置油道, 强度高、韧性好;
 采用瑞士进口旋转马达;
 使用立式铄车马达旋转系统, 360° 旋转, 具有铄车制动功能;
 油缸采用珩磨管, 进口 HALLITE 油封, 工作周期短、寿命长;
 单缸连杆设计, 质地轻, 抓取灵便。

Applicable objects: simple soil loosening, cleaning debris, loading and unloading.
 Main features: NM400 steel, light weight and wear-resistant;
 The pin is made of 42CrMo alloy steel, with built-in oil passage, high strength and good toughness;
 Rotary motor imported from Switzerland;
 Use vertical car motor rotation system, 360° rotation, with car brake function;
 The oil cylinder adopts honing tube, imported HALLITE oil seal, short working cycle and long life;
 Single-cylinder connecting rod design, light texture and convenient gripping.



项目 / 型号 Item/Model	单位 Unit	JS60B	JS150B	JS150BP	JS220B	JS220BP
适用挖掘机 Suitable Excavator	ton	6-9	9-16	12-18	18-26	20-28
重量 Weight	kg	450	1050	1250	1600	1950
开口 Opening	mm	1400	1650	1650	2100	2100
工作压力 Working Pressure	bar	180	250	250	280	280
设定压力 Set Up Pressure	bar	180	250	250	280	280
工作流量 Working Flow	lpm	100	160	160	200-250	200-250

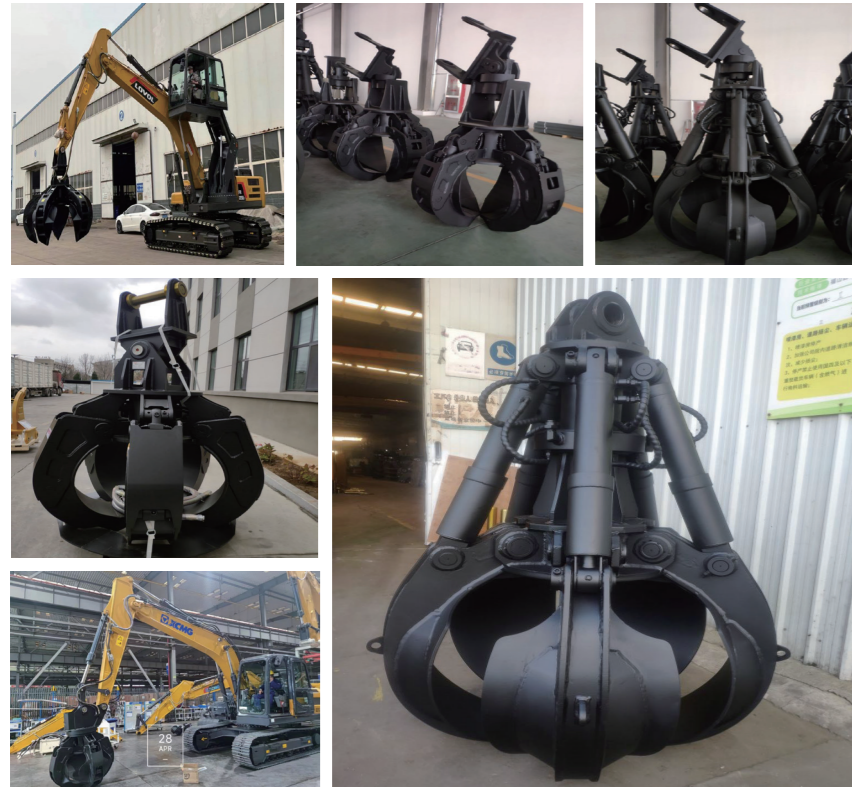
注: P-卡爪为 3+4 抓

智能装卸装备

莲花抓 Orange Peel Grapple

适用对象：散装石料、钢材、木料等物料的装卸、搬运作业。
 主要特点：采用 NM500 钢材，质量轻、耐磨；
 销轴采用 42CrMo 合金钢，内置油道，强度高、韧性好；
 采用瑞士进口旋转马达，使用立式铲车马达旋转系统，360°旋转，具有刹车制动功能；
 油缸采用珩磨管，进口 HALLITE 油封，工作周期短、寿命长。

Applicable objects: loading, unloading, and handling of bulk stone, steel, wood and other materials.
 Main features: NM500 steel, light weight and wear-resistant;
 The pin is made of 42CrMo alloy steel, with built-in oil passage, high strength and good toughness;
 Rotary motor imported from Switzerland, vertical cart motor rotation system, 360° rotation, cart brake function;
 The oil cylinder adopts honing tube, imported HALLITE oil seal, short working cycle and long life.



莲花抓 A
Orange Peel Grapple A



莲花抓 B
Orange Peel Grapple B

项目 / 型号 Item/Model	单位 Unit	SOG04	JSOG04	JSOG04	JSOG04	JSOG15	JSOG15	JSOG15	JSOG15	JSOG15	JSOG15	JSOG15	JSOG15	JSOG15	JSOG15	JSOG15	JSOG20	JSOG20	JSOG20	JSOG20	JSOG20	JSOG20	JSOG20	JSOG20	JSOG20	JSOG20	JSOG20	JSOG20		
适用挖掘机 Suitable Excavator	ton	6-9	6-9	6-9	6-9	9-16	9-16	9-16	9-16	9-16	9-16	9-16	9-16	9-16	9-16	9-16	18-30	18-30	18-30	18-30	18-30	18-30	18-30	18-30	18-30	18-30	18-30	18-30		
重量 Weight	kg	355	420	385	450	900	1000	820	920	850	950	1850	2100	1500	1750	1600	1850	2100	1500	1750	1600	1850	2100	1500	1750	1600	1850	2100		
高度 Height	mm	1127	1127	1435	1435	1648	1648	1550	1550	1800	1800	1870	1870	1850	1850	2075	2075	2250	2680	3000										
宽度 Width	mm	1000	1000	1000	1000	1260	1260	1260	1260	1260	1260	1605	1534	1605	1534	1605	1534	1130	1300	1540										
开口 Opening	mm	1200	1200	1200	1200	1600	1600	1600	1600	1600	1600	2050	2050	2050	2050	2050	2050	1800	2200	2600										
驱动压力 Driving Pressure	bar	180	180	180	180	250	250	250	250	250	250	280	280	280	280	280	280	250	280	300										
驱动流量 Driving Flow	lpm	100	100	100	100	160	160	160	160	160	160	220	220	220	220	220	220	160	300	300										
容量 Capacity	m ³	0.3	0.3	0.3	0.3	0.6	0.6	0.6	0.6	0.6	0.6	1	1	1	1	1	1	0.6	1	1.2										

注：A- 重型；B- 利勃海尔型；R- 旋转型；F- 固定型；S- 摇摆型；4T- 爪瓣 4 个；5T- 爪瓣 5 个

智能装卸装备

铲斗夹 Clamp Bucket

适用对象：碎石场地挖、夹及各种中小型材料的装卸作业。
 主要特点：采用 Q345 锰板钢材，强度高、耐腐蚀；
 销轴采用 42CrMo 合金钢，内置油道，强度高、韧性好；
 旋转式采用瑞士进口旋转马达；
 油缸采用珩磨管，进口 HALLITE 油封，工作周期短、寿命长。

Applicable objects: excavation and clamping of gravel sites and loading and unloading of various small and medium materials.
 Main features: using Q345 manganese plate steel, high strength and corrosion resistance;
 The pin is made of 42CrMo alloy steel, with built-in oil passage, high strength and good toughness;
 Rotary type uses Swiss imported rotary motor;
 The oil cylinder adopts honing tube, imported HALLITE oil seal, short working cycle and long life.



项目 / 型号 Item/Model	单位 Unit	JSCB20	JSCB40	JSCB40R	JSCB80	JSCB80R	JSCB150	JSCB150R	JSCB200	JSCB200R	JSCB300	JSCB300R
适用挖掘机 Suitable Excavator	ton	2.3	3-5	3-5	6-9	6-9	12-18	12-18	20-30	20-30	30-40	30-40
重量 Weight	kg	167	350	470	580	690	820	950	1400	1770	1630	1930
高度 Height	mm	880	1150	1300	1300	1630	1750	2100	2000	2410	2250	2940
宽度 Width	mm	330	430	430	600	600	690	690	850	850	980	980
开口 Opening	mm	850	1180	1180	1380	1380	1550	1550	2300	2300	2670	2670
驱动压力 Driving Pressure	bar	180	180	180	180	180	250	250	280	280	280	280
驱动流量 Driving Flow	lpm	60	60	60	100	100	160	160	220	220	220	220
齿宽 Tine Width	mm	300	430	430	600	600	560	560	710	710	855	855

注：R- 液压旋转型

智能装卸装备

倾斜斗 Tilt Bucket

主要特点：能够改变挖掘机（铲）挖斗的倾斜角度，不需要改变挖掘机位置就能进行作业，减少机械磨损和油耗，提高工作效率；
 使用高强度材料，适用于 4-50 吨位的各种机型；
 可倾斜角度为 +/-26 度，如需更大的倾斜角度，可以定做。

Main features: it can change the inclination angle of the excavator (shovel) bucket, it can work without changing the position of the excavator, reducing mechanical wear and fuel consumption, and improving work efficiency;
 Using high-strength materials, suitable for various models of 4-50 tons;
 The tilting angle is +/- 26 degrees. If a larger tilting angle is required, it can be customized.



智能装卸装备

贝壳斗 Clamshell Bucket

适用对象：散装碎状、沙状等物料的装卸作业。
 主要特点：采用 NM500 耐磨钢材，强度高、耐磨损；
 销轴采用 42CrMo 合金钢，使用热处理技术，内置油道，强度高、韧性好；
 双油缸连杆设计，采用珩磨管，进口 HALLITE 油封，工作周期短、寿命长，操作灵活。

Applicable object: loading and unloading of broken and sandy materials in bulk.
 Main features: NM500 wear-resistant steel, high strength and wear resistance;
 The pin is made of 42CrMo alloy steel, using heat treatment technology, built-in oil passage, high strength and good toughness;
 Double-cylinder connecting rod design, using honing tube, imported HALLITE oil seal, short working cycle, long life and flexible operation.



项目 / 型号 Item/Model	单位 Unit	JSCS1200	JSCS1200R	JSCS1600	JSCS1600R	JSCS2000	JSCS2000R	JSCS2500
适用挖掘机 Suitable Excavator	ton	12-16	12-16	18-26	18-26	28-35	28-35	35-45
重量 Weight	kg	1200	1400	2000	2200	2200	2500	2450
开口 Opening	mm	1800	1800	2200	2200	2380	2380	2380
工作压力 Working Pressure	bar	210	210	250	250	250	250	250
设定压力 Set Up Pressure	bar	280	280	300	300	320	320	320
工作流量 Working Flow	pm	180	180	220	220	240	240	240

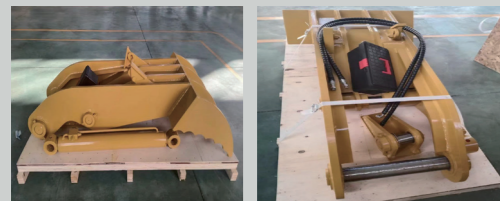
注：M-机械连杆型

夯桩及辅助装备

拇指夹 Hydraulic Power Thumb

适用对象：物料抓取辅助作业。
 主要特点：采用 Q345 锰板钢材，强度高、耐腐蚀；
 油缸采用珩磨管，进口 HALLITE 油封，工作周期短、寿命长。

Applicable object: auxiliary operation for material grabbing.
 Main features: using Q345 manganese plate steel, high strength and corrosion resistance;
 The oil cylinder adopts honing tube, imported HALLITE oil seal, short working cycle and long life.



项目 / 型号 Item/Model	单位 Unit	JSPT02M	JSPT02M	JSPT04	JSPT04M	JSPT06	USPT06M	JSPT08	JSPT08M
适用挖掘机 Suitable Excavator	ton	3-5	3-5	6-9	6-9	9-16	9-16	18-26	18-26
长度 Length	mm	500-800	500-800	800-1300	800-1300	900-1500	900-1500	1000-2000	1000-2000
宽度 width	mm	300-600	300-600	400-800	400-800	500-1000	500-1000	600-130	600-130
高度 Height	mm	180-300	180-300	200-280	200-280	250-380	250-380	260-400	260-400
工作压力 Working Pressure	bar	180	-	180	-	250	-	280	-
工作流量 Working Flow	lpm	35-55	-	50-100	-	90-110	-	100-140	-

具体尺寸根据挖斗数据不同略有出入。

注：M-机械连杆型

夯桩及辅助装备

耙子 Excavator Rake

适用对象：简易松土、清理杂物、装卸等作业。
 主要特点：采用 Q345 锰板钢材，强度高、耐腐蚀；
 销轴采用 42CrMo 合金钢，内置油道，强度高、韧性好。

Applicable object: loose work in hard geological layer, frozen soil layer, soft stone, weathered stone and other geology.
 Main features: using Q345 manganese plate steel, high strength and corrosion resistance;
 The pin is made of 42CrMo alloy steel, with built-in oil passage, high strength and good toughness.



项目 / 型号 Item/Model	单位 Unit	耙子 A 款					耙子 B 款				
		JSER02A	JSER04A	JSER06A	JSER08A	JSER10A	JSER02B	JSER04B	JSER06B	JSER08B	JSER10B
适用挖掘机 Suitable Excavator	ton	3-5	6-9	9-16	18-26	26-35	3-5	6-9	9-16	18-26	26-35
重量 Weight	kg	180	290	610	1600	2000	220	345	690	1320	2050
长度 Length	mm	1010	1320	1830	2200	2600	1000	1170	1825	2155	2500
宽度 Width	mm	360	485	635	785	945	430	510	650	760	890
高度 Height	mm	880	1175	1460	1710	2050	940	1390	1460	1700	2000

夯桩及辅助装备

松土器 Ripper

适用对象：较硬的硬土层、冻土层及软石、风化石等地质的松散作业。
 主要特点：采用 Q345 锰板钢材，强度高、耐腐蚀；
 销轴采用 42CrMo 合金钢，内置油道，强度高、韧性好。

Applicable object: loose work in hard geological layer, frozen soil layer, soft stone, weathered stone and other geology.
 Main features: using Q345 manganese plate steel, high strength and corrosion resistance;
 The pin is made of 42CrMo alloy steel, with built-in oil passage, high strength and good toughness.



项目 / 型号 Item/Model	单位 Unit	JSR02	JSR04	JSR06	JSR08	JSR10	JSR14	JSR17	JSR20	JSR24
适用挖掘机 Suitable Excavator	ton	3-5	6-9	9-16	18-26	26-35	30-40	40-50	50-65	65-90
A: 中心距 Pin to Pin Distance	mm	265	310	390	465	520	570	定制	定制	定制
B: 全宽 Overall Width	mm	403	500	670	870	950	1115	1166	1227	1356
C: 全高 Overall Height	mm	682	905	1200	1300	1415	1495	1665	1788	1989
D: 轴径 Pin Diameter	mm	40-50	50-55	60-70	70-80	80-90	80-90	90-110	定制	定制
E: 开档 Dipper Width	mm	150-180	180-200	200-315	300-350	360-420	360-420	400-500	定制	定制
主板厚度 Plate Thickness	mm	50	50	60	80	80	90	90	100	100
斗齿型号 Teeth Model	type	DH55	DH150	DH220	D85C	D85C	4T5502-2	4T5502-2	D11	D11
重量 Weight		65	125	260	426	575	730	850	1320	1810

注：DT-双斗齿型；DH-双头双型

夯桩及辅助装备

快速连接器 Hydraulic Quick Hitch

适用对象：配合各种型号挖掘机辅助快换作业。
 主要特点：采用 Q345 锰板钢材，强度高、耐腐蚀；
 销轴采用 42CrMO 合金钢，强度高、韧性好；
 油缸采用珩磨管，进口 HALLITE 油封，工作周期短、寿命长；
 活动虎口卡簧圆盘保护设计，安全销加粗设计，安全可靠。

Applicable object: Cooperate with various types of excavators to assist quick change operation.
 Main features: using Q345 manganese plate steel, high strength and corrosion resistance;
 The pin is made of 42CrMo alloy steel with high strength and toughness;
 The oil cylinder adopts honing tube, imported HALLITE oil seal, short working cycle and long life;
 Removable tiger mouth spring disc protection design, bold design of safety pin, safe and reliable



项目 / 型号 Item/Model	单位 Unit	JS20P	JS20PM	JS25P	JS25PM	JS30P	JS30PM	JS35P	JS35PM	JS40P	JS40PM	JS45P	JS45PM	JS50P	JS50PM	JS55P	JS55PM	JS60P	JS60PM	JS70P	JS80P	JS90P	JS100P	JS110P	JS120P
适用挖掘机 Suitable Excavator	ton	1-2	1-2	2-3	2-3	2-3	2-3	3-4	3-4	3-4	3-4	4-7	4-7	5-8	5-8	5-8	5-8	9-16	9-16	18-24	18-24	26-30	30-40	35-45	40-50
重量 Weight	kg	25-40	25-40	25-40	25-40	25-40	25-40	25-40	25-40	25-40	25-40	50-60	50-60	85	85	85	85	150-180	150-180	290-330	290-330	420-430	450-580	500-750	1000-1100
长度 Length	mm	400-450	400-450	400-450	400-450	400-450	400-450	400-450	400-450	400-450	400-450	534-545	534-545	600	600	600	600	800	800	924-977	924-977	983-1050	1006-1473	1006-1473	1300-1500
高度 Height	mm	260	260	260	260	260	270	270	270	270	270	310	310	345	345	345	345	410	410	492	492	574	558-610	558-610	800
宽度 Width	mm	180-220	180-220	180-220	180-220	180-220	180-220	180-220	180-220	180-220	180-220	258-263	258-263	270-280	270-280	270-280	270-280	353-436	353-436	449-483	449-483	543-568	606-663	606-663	600-700
轴中心距 Pin to Pin Center Distance	mm	80-150	80-150	80-150	80-150	160-220	160-220	160-220	160-220	160-220	160-220	230-270	230-270	290-360	290-360	290-360	290-360	380-420	380-420	460-480	460-480	473-540	550-620	550-620	570-620
小臂开档 Farearm Open Width	mm	80-140	80-140	80-140	80-140	80-140	80-140	80-140	80-140	80-140	80-140	145-170	145-170	180-200	180-200	180-200	180-200	220-275	220-275	306-340	306-340	375-411	416-469	416-469	450-500
油缸伸缩距 Stroke	mm	170-206	170-206	170-206	170-206	170-206	170-206	170-206	170-206	170-206	170-206	205-275	205-275	340-450	340-450	340-450	340-450	340-486	340-486	256-390	256-390	413-590	520-590	520-590	440-520
上下轮之间距离 Top to Bottom pin Distance	mm	165	165	165	165	165-170	165-170	165-170	165-170	165-170	165-170	200	200	230	230	230	230	250	250	275	275	300	360	360	510
轴直径 Pin Diameter	mm	20	20	25	25	30	30	35	35	40	40	45	45	50	50	55	55	60	60	70	80	90	100	110	120
工作压力 Working Pressure	bar	32-40	-	32-40	-	32-40	-	32-40	-	32-40	-	32-40	-	32-40	-	32-40	-	32-40	-	32-40	32-40	32-40	32-40	32-40	32-40
工作流量 Working Flow	lpm	10-20	-	10-20	-	10-20	-	10-20	-	10-20	-	10-20	-	10-20	-	10-20	-	10-20	-	10-20	10-20	10-20	10-20	10-20	10-20

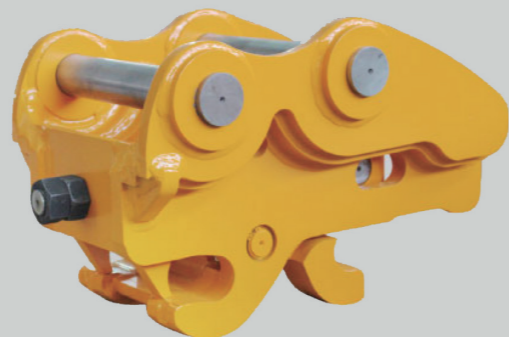
注：P-P 型连接器；H-H 型连接器；M、机械型；DL- 双锁型；T- 单缸摇摆型；DT- 双缸摇摆型；DLT- 摇摆双锁型

夯桩及辅助装备

双保险快速连接器 Hydraulic Quick Hitch (Double Lock Type)

适用对象：配合各种型号挖掘机辅助快换作业。
 主要特点：采用 NM400 钢材，强度高、耐腐蚀；
 销轴采用 42CrMO 合金钢，强度高、韧性好；
 油缸采用珩磨管，进口 HALLITE 油封，工作周期短、寿命长。

Applicable object: Cooperate with various types of excavators to assist quick change operation.
 Main features: using NM400 plate steel, high strength and corrosion resistance;
 The pin is made of 42CrMo alloy steel with high strength and toughness;
 The oil cylinder adopts honing tube, imported HALLITE oil seal, short working cycle and long life.



夯桩及辅助装备

压实轮 Compacting wheel

适用对象：土壤、沥青混凝土、各填方材料和粘性土质多的各种材料的路面和基础层压实；
 沟槽和管线工程、回填和基础施工、边坡压实施工；含水量较大，粒度大小不等的粘性土壤
 方压实效果较好；压实粘土和砾石、粘性土壤等。
 主要特点：设计合理，结构简单、坚固、使用寿命长；密封润滑设计免维护，并且适合各种恶劣的工况；安装简单、使用方便、故障低；完成高难度的压实作业；可有效地压实各种土壤铺层及砾石、碎石等填方。

Applicable objects: Soil, asphalt concrete, various fill materials and viscous soil of various materials of pavement and foundation compaction; Trench and pipeline engineering, backfill and foundation construction, slope pressure implementation; The compaction effect of clay filling with larger water content and different grain size is better. Compacted clay and gravel, clayey soil, etc.
 Main features: Reasonable design, simple structure, strong, long service life; Seal lubrication design is maintenance-free and suitable for a variety of harsh working conditions, Simple installation, easy to use, low fault; Complete difficult compaction operations; It can effectively compact all kinds of soil paving and gravel, gravel and other fill.



项目 / 型号 Item/Model	单位 Unit	JSCW520	JSCW620	JSCW720	JSCW820
适用挖掘机 Suitable Excavator	ton	6-9	9-16	18-26	26-35
重量 Weight	kg	310	485	720	1150
高度 Height	mm	797	930	1075	1240
宽度 Width	mm	440	512	600	700
长度 Length	mm	520	620	720	820

夯桩及辅助装备

枕木机 Sleeper Machine

适用对象：铁路维护和抢修的需要而专门设计的轨枕枕木机。可以机械化地清除、更换任何种类的轨枕，包括水泥轨枕、木轨枕、钢质轨枕等。
 主要特点：轨枕更换装置通过安装座与挖掘机臂的前端连接，安装简单；机械化手段开挖回填道碴，可降低开挖回填道碴的劳动强度，降低投资成本；轨枕夹紧装置，可进一步降低拔出旧轨枕和嵌入新轨枕的劳动强度和操作时间。

Applicable objects: Sleeper machine specially designed for railway maintenance and emergency repair needs. It can mechanically remove and replace any kind of rail, including cement sleeper, wood sleeper, steel sleeper, etc.
 Main features: The replacement device of the sleeper is connected with the front end of the excavator arm through the mounting seat, and the installation is simple; The mechanized method can reduce the labor intensity and investment cost of backfill ballast excavation. The sleeper clamping device can further reduce the labor intensity and operation time of pulling out the old sleeper and inserting the new sleeper.



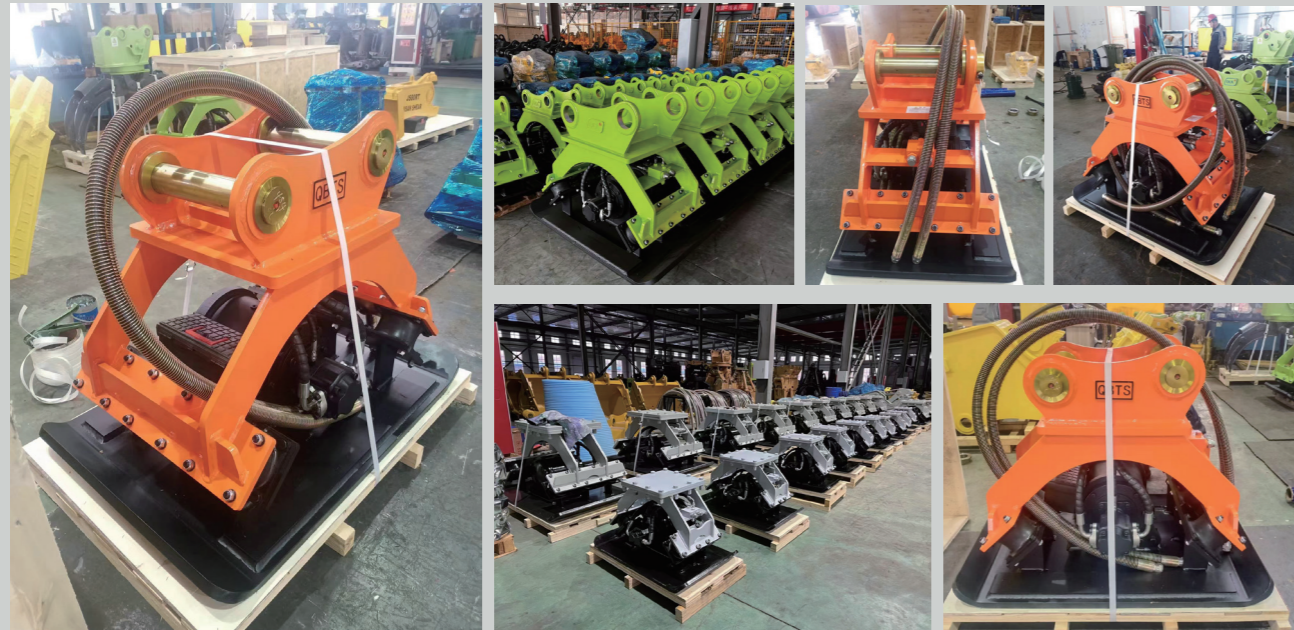
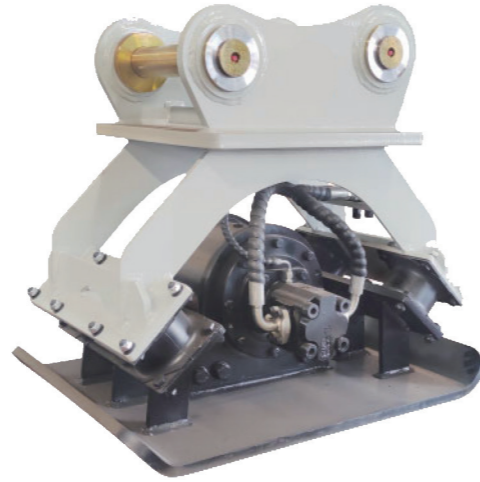
项目 / 型号 Item/Model	单位 Unit	JSSM80
适用挖掘机 Suitable Excavator	ton	6-9
重量 Weight	kg	716
高度 Height	mm	1265
宽度 Width	mm	1546
开口 Opening	mm	600
驱动压力 Driving Pressure	bar	200
驱动流量 Driving Flow	pm	150-200

夯桩及辅助装备

夯实器 Hydraulic Plate Compactor

适用对象: 沟渠、斜坡、台阶及复杂地形夯实、打拔桩、破碎等作业。
 主要特点: 采用 Q345 锰板钢材, 强度高、耐腐蚀;
 销轴采用 42CrMo 合金钢, 内置油道, 强度高、韧性好;
 马达使用美国进口液压振动马达, 坚固耐用;
 轴承使用德国进口 FAG 轴承, 噪音低、安全可靠;
 减震块采用韩国 Autox, 韧性好、耐疲劳。

Applicable objects: ramming, ramming, piling and crushing of trenches, slopes, steps and complex terrains.
 Main features: using Q345 manganese plate steel, high strength and corrosion resistance;
 The pin is made of 42CrMo alloy steel, with built-in oil passage, high strength and good toughness;
 The motor uses a hydraulic vibration motor imported from the United States, which is sturdy and durable;
 Bearings use German imported FAG bearings, low noise, safe and reliable;
 The shock absorber adopts Korean Autox, which has good toughness and fatigue resistance.



项目 / 型号 Item/Model	单位 Unit	JSC02	JJSC04	JSC06	JSC08	JSC010
适用挖掘机 Suitable Excavator	ton	3-5	6-9	9-16	18-26	26-35
打击力 Power of Impulse	ton	3	5	10	15	15
最大振动次数 Maximum Vibration	r/min	1800	1800	1800	1800	1800
工作流量 Working Flow	lpm	70	70	140	176	176
工作压力 Working Pressure	bar	100-130	100-130	120-150	120-180	120-180
重量 Weight	kg	200	325	560	900	950
打击面积 Bottom Measurement	L*W,mm	735*470	900*550	990*700	1320*885	1718*1000
高度 Height	mm	620	676	845	1060	1100
宽度 Width	mm	470	550	700	885	1000

夯桩及辅助装备

打桩机 Pile Hammer

适用对象: 各类管材、钢板等打拔桩作业。
 主要特点: 采用 Q345 锰板钢材, 强度高、耐腐蚀;
 销轴采用 42CrMo 合金钢, 内置油道, 强度高、韧性好;
 旋转马达采用瑞士进口马达;
 油封采用美国伊顿进口油封, 延长使用寿命;
 减震块采用韩国 Autox, 韧性好、耐疲劳;
 一体式设计, 安全稳定、故障率低。

Applicable objects: various types of pipe, steel plate, etc.
 Main features: using Q345 manganese plate steel, high strength and corrosion resistance;
 The pin is made of 42CrMo alloy steel, with built-in oil passage, high strength and good toughness;
 Rotary motor adopts Swiss imported motor;
 The oil seal adopts the oil seal imported from Eaton in the United States to extend the service life;
 The shock absorber adopts Korean Autox, with good toughness and fatigue resistance;
 Integrated design, safe and stable, low failure rate.



项目 / 型号 Item/Model	单位 Unit	JSP150	JSP250	JSP250R	JSP330	JSP330R	JSP350	JSP450	JSP550
适用挖掘机 Suitable Excavator	ton	15-18	20-30	20-30	30-38	30-38	38-45	45-55	55-65
偏心力矩 Eccentric Moment	Nm	32	36	36	50	50	65	85	85
振频 Frequency	rpm	2500	2600	2600	2800	2800	2800	2600	2600
离心力 Centrifugal Force	kN	200	400	400	480	480	580	650	850
工作压力 Working Pressure	bar	280	300	300	320	320	320	320	320
工作流量 Working Flow	lpm	130	155	155	210	210	270	300	380
旋转角度 Turning	degree	180	180	360	180	360	180	180	180
主机重量 Main Body Weight	kg	1350	1950	2000	2650	2750	2900	3200	4000
附臂重量 Extension Boom Weight	aB	250	450	500	750	750	750	800	900
总重 Total Weight	kg	1600	2400	2500	3400	3500	3650	4000	4900

注: R-360° 旋转型